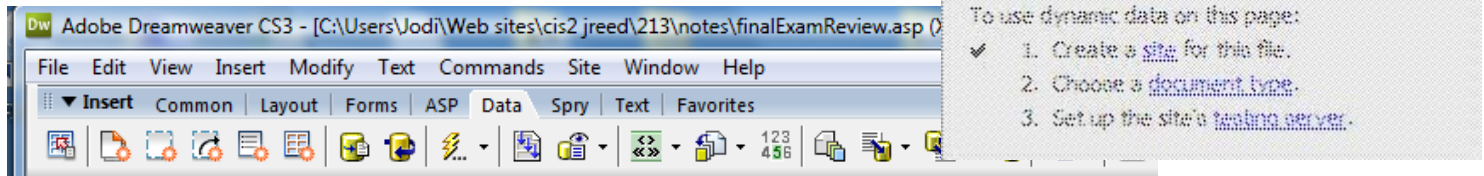


## DATABASE INTEGRATION REVIEW

DB integration tasks can be accomplished via the **Databases Panel Group** or the **Data** menu.



## VIDEO DEMOS

<http://cis2.cuyamaca.net/jreed/213/video.asp> - Lynda.com links on top of page, my videos at the bottom of the page

## GENERAL TIPS

- ◆ test everything whenever you can!
- ◆ don't forget to save and upload!
- ◆ Be sure to **test on the server** when you are finished

## TROUBLESHOOTING TIPS

- Upload the whole folder and the connections folder & try again
- Try using the live data view button to get error details
- Some pages need to be tested by starting on another page (for example, to test update, start with the page that LINKS to the update page)
- Does your page have .php extension?
- If necessary, start over
- Use the wizards in the **Data** menu whenever possible

## QUICK REVIEW

### CREATING THE DATABASE

- Use <http://cis9.cuyamaca.net/phpmyadmin/> to create a database on the server
- Use your WampServer or MampServer phpMyAdmin to create a local database
- You can export and import MySQL databases using the default settings. To import, create a new database and use the import function in phpMyAdmin. Make sure the database names and privileges match.

---

## CONNECTION

- ❑ You may need to **UPLOAD** the **Connections** folder
- ❑ If you are unable to make a connection on the server, work locally and upload when you finish. All should work on the server as long as the connection file is valid. Here is sample code for a connection file on our cis9 server:

```
<?php
# FileName="Connection_php_mysql.htm"
# Type="MYSQL"
# HTTP="true"
$hostname_conContacts = "localhost";
$database_conContacts = "contacts";
$username_conContacts = "cs4admin";
$password_conContacts = "cis213";
$conContacts = mysql_pconnect($hostname_conContacts,
$username_conContacts,$password_conContacts) or trigger_error(mysql_error(),E_USER_ERROR);
?>
```

---

## DETAIL PAGE

- ❑ start with recordset
- ❑ drag data from recordset to page to display

---

## LIST PAGE

- ❑ Start with recordset – don't forget to test! (When you test, examine the data, noting which field is the most likely primary key and whether any fields look like autonumber fields)
- ❑ drag data from recordset to page to display
- ❑ select what you want to repeat and add a **Repeat Region** Server Behavior (NOTE - Use the quick tag selector to select all the relevant code. For example, if you are selecting a table row, make sure you get the <tr> and </tr> tags.)

---

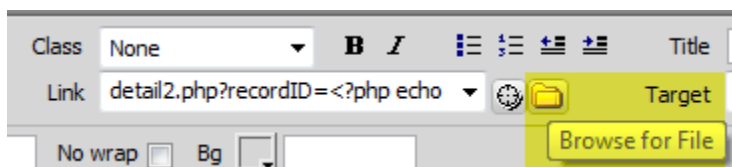
## LIST PAGE LINK TO DETAIL:

- ❑ Quick and easy way: Use the **Master-Detail wizard**.
- ❑ Start by creating **master.php** and **detail.php**. Open **master.php** and create a recordset.
- ❑ Use the **Master Detail Page Set wizard** to create a list of records that link to **detail.php**

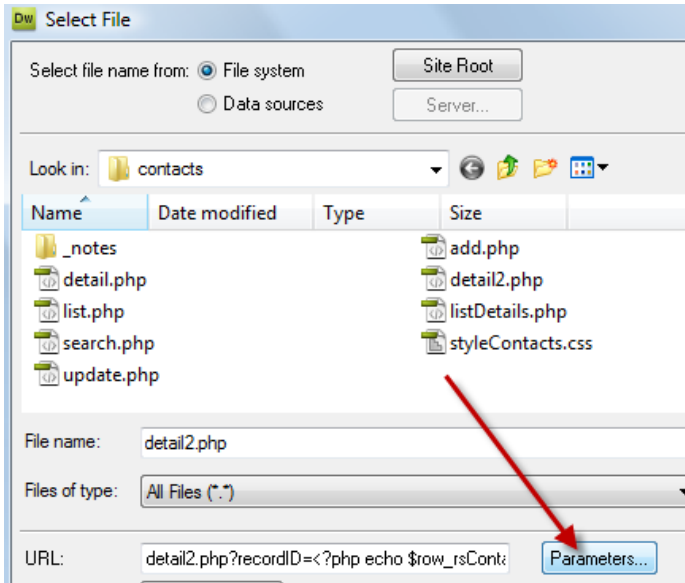
---

## LIST PAGE LINK TO DETAIL: MANUAL

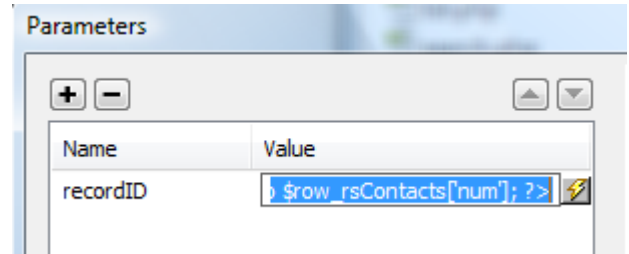
- ❑ The manual way involves changes to the LIST page and the DETAIL page.
- ❑ Start by creating a page that lists the records and a page that shows the details for one record.
- ❑ Select one of the fields on the list page and link to the detail page in the property inspector. When you make the link, use the FOLDER ICON to Browse for File.



- Click the Parameters button.



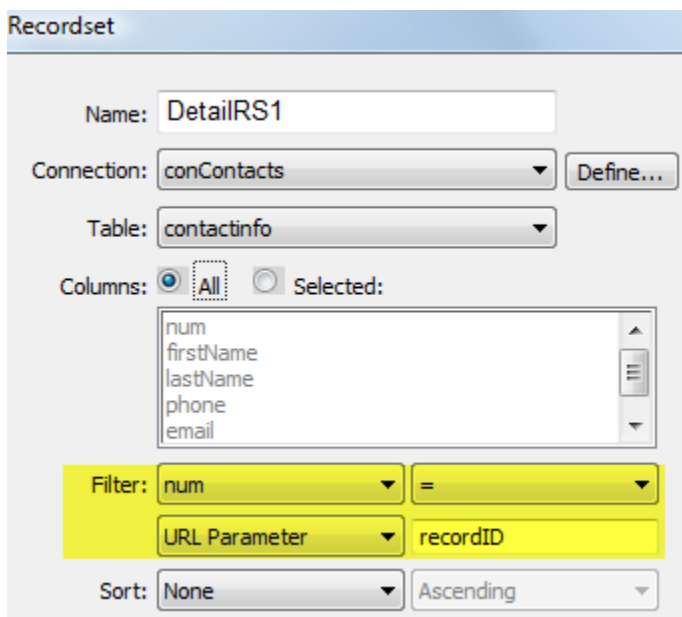
- Type a Parameter Name and choose the value by clicking the lightning bolt icon and choosing a unique field like the primary key. Remember the NAME.



- At this point, you can preview in the Browser and test the link. The link won't completely work, but look for the URL parameter in the URL. (URL?name=value)

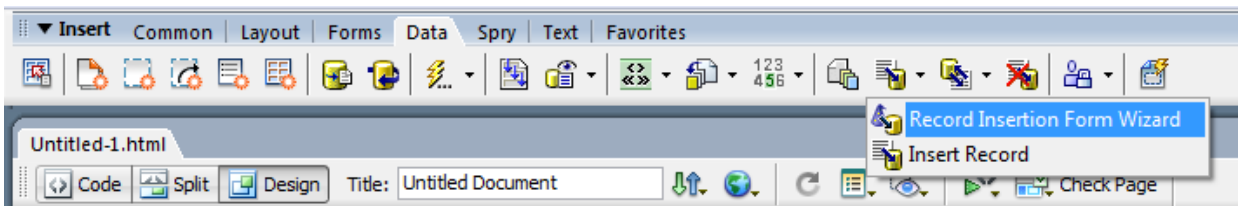
<http://cis9.cuyamaca.net/jo.reed/projects/contacts/detail2.php?recordID=5>

- Open the detail page and filter the recordset. Make sure the **Names** and **Values** match.



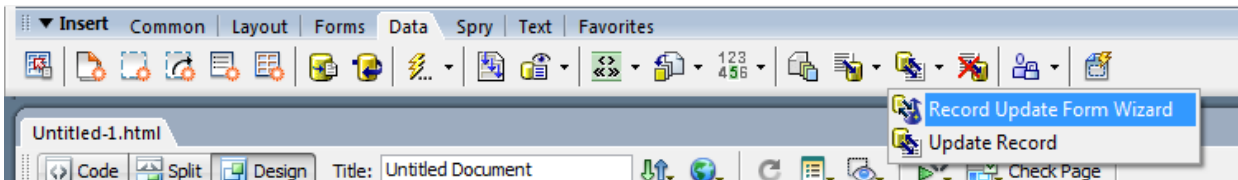
## INSERT PAGE

- ❑ In the **Insert > Data** menu, click the **Record Insertion Form Wizard** button.



## UPDATE PAGE

- ❑ start the update page with a recordset
- ❑ In the **Insert > Data** menu, click the **Record Update Form Wizard** button.



- ❑ In the Update Form dialog box, remove any autonumber fields or fields you don't want to update
- ❑ In the detail page or list page, link to the update page with the folder icon (**Browse for File**) and click the **Parameters** button. Type in the parameter Name and click the lightning bolt icon to choose the dynamic value (use the primary key or another unique filed).
- ❑ In the Update page, filter the recordset by the URL parameter.

## SEARCH PAGE

- ❑ start by creating a search page and a search results page.
- ❑ On **search** page, create a form with a text box or menu and submit button.
- ❑ On **results** page, create a recordset filtered by FORM variable using label from the search page form field.
- ❑ Use the recordset to show desired data on page. Add a repeat behavior.

A screenshot of the 'Recordset' dialog box in Dreamweaver. The dialog has a blue header with the title 'Recordset'. It contains several fields and options: 'Name' is 'rsContacts'; 'Connection' is 'connContacts' with a 'Define...' button; 'Table' is 'contactInfo'; 'Columns' has 'All' selected; a list of columns includes 'num', 'firstName', 'lastName', 'phone', and 'email'; 'Filter' is 'lastName' with a dropdown menu set to 'begins with'; 'Form Variable' is 'whatever'; and 'Sort' is 'None' with a dropdown menu set to 'Ascending'.